

# POWR-GARD® Fuse Datasheet

## CNN\_E / CNN / CNL SERIES LIFT TRUCK FUSES

32/48/80 V dc • Fast-Acting and Very Fast-Acting • 10–800 A



### Description

CNN\_E fuses are rated for applications up to 80 V dc. As fork lift trucks and electrical vehicle system voltages increase, circuit protection needs to be rated higher than the standard CNN products to handle the increased voltage. The CNN\_E is considered very fast-acting for quicker reaction time.

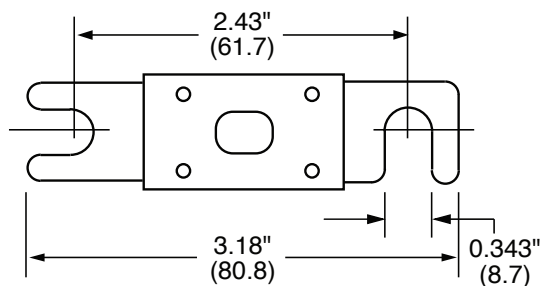
### Features/Benefits

- Up to 80 V dc protection
- Window shows fuse status
- Up to 2,700 A interrupting rating
- Compact size saves space
- RoHS compliant and lead (Pb) free

### Applications

- Lift trucks
- Scissor lifts
- Pallet movers
- Low voltage battery powered equipment

### Dimensions inches (mm)



### Specifications

|                                 |  |
|---------------------------------|--|
| <b>Voltage Ratings</b>          | CNN_E: 80 V dc / 125 V ac<br>CNN: 48 V dc / 125 V ac<br>CNL: 32 V dc / 32 V ac |
| <b>Ampere Ratings</b>           | 10 – 800 A*  |
| <b>Max. Interrupting Rating</b> | CNN_E: 2,700 A<br>CNN/CNL: 2,500 A   |
| <b>Approval</b>                 | CNN_E: cURus (File E71611)<br>CNN/CNL: UR (File E71611)                        |
| <b>Environmental</b>            | RoHS Compliant, Lead (Pb) Free   |
| <b>Country of Origin</b>        | CNN_E: Mexico<br>CNN/CNL: China  |

\*See ordering information table for available amperages by series

### Ordering Information

| AMPERE RATINGS CNN_E (80 V DC) |     |     |     |     |     |
|--------------------------------|-----|-----|-----|-----|-----|
| 35                             | 80  | 150 | 250 | 350 | 700 |
| 40                             | 90  | 175 | 275 | 400 | 800 |
| 50                             | 100 | 200 | 300 | 500 | —   |
| 60                             | 125 | 225 | 325 | 600 | —   |

| AMPERE RATINGS CNN (48 V DC) |     |     |     |     |     |
|------------------------------|-----|-----|-----|-----|-----|
| 10                           | 60  | 125 | 225 | 325 | 600 |
| 35                           | 80  | 150 | 250 | 350 | 700 |
| 40                           | 90  | 175 | 275 | 400 | 800 |
| 50                           | 100 | 200 | 300 | 500 | —   |

| AMPERE RATINGS CNL (32 V CDC) |     |     |     |     |   |
|-------------------------------|-----|-----|-----|-----|---|
| 35                            | 80  | 150 | 250 | 350 | — |
| 40                            | 100 | 175 | 275 | 400 | — |
| 50                            | 125 | 200 | 300 | 500 | — |
| 60                            | 130 | 225 | 325 | —   | — |

| SERIES | TYPE             | VOLT DC | AMP | CATALOG NUMBER | ORDERING NUMBER |
|--------|------------------|---------|-----|----------------|-----------------|
| CNN_E  | VERY FAST-ACTING | 80      | 200 | CNN200E        | 0CNN200E.V      |
| CNN    | VERY FAST-ACTING | 48      | 125 | CNN125         | 0CNN125.V       |
| CNL    | FAST-ACTING      | 32      | 50  | CNL050         | 0CNL050.V       |

### Web Resources

80 V dc: [Littelfuse.com/cnne](http://Littelfuse.com/cnne)  
 48 V dc: [Littelfuse.com/cnn](http://Littelfuse.com/cnn)  
 32 V dc: [Littelfuse.com/cnl](http://Littelfuse.com/cnl)

### Recommended Fuse Block

LFFB0003Z - [Littelfuse.com/lffb](http://Littelfuse.com/lffb)

**Disclaimer Notice** – Information furnished is believed to be accurate and reliable. However, users should independently evaluate the suitability of and test each product selected for their own applications. Littelfuse products are not designed for, and may not be used in, all applications. Read complete Disclaimer Notice at [www.littelfuse.com/product-disclaimer](http://www.littelfuse.com/product-disclaimer).